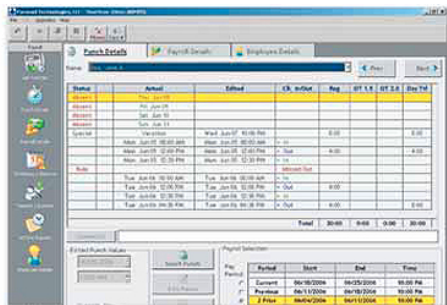


Pyramid TimeTrax Pro

Time and Attendance System

- Plug-And-Play Simplicity, including Signals for Optional Clocks, Horns or Bells (requires signal relay)
- Available with Serial (Direct) [standard] or Ethernet (TCP/IP) [upgrade] Communications
- Magnetic Stripe Employee Badge Swipe Reader or PIN Entry at Clock Terminal
- Battery Backup to Keep Punch Data Safe During Power Loss
- One Year Warranty

TimeTrax*pro*



Attendance Report Period: 14-Jul-06 11:09 AM Page 1 of 1
For The Period 09-Jul-06 through 16-Jul-06

Employee Name	Date	Status	Time
Doc, Jane A	07/10/2006	Absent	
Doc, Jane A	07/11/2006	Absent	
Doc, Jane A	07/12/2006	Absent	
Doc, Jane A	07/13/2006	Absent	
Doc, Jane A	07/14/2006	Absent	
Smith, John Q	07/10/2006	Absent	
Smith, John Q	07/11/2006	Absent	
Smith, John Q	07/12/2006	Absent	
Smith, John Q	07/13/2006	Absent	
Smith, John Q	07/14/2006	Absent	

TIME CARD REPORT Employee Name: CAREY, CAROL L Page 1 of 1
Payroll Group: HOURLY EMPLOYEES / Employees Group: HOURLY EMPLOYEES - Default Emp Grp
For The Pay Period: 04/03/2006 12:00 AM Thru 04/10/2006 12:00 AM

Date	Actual	Edited	In/Out	Rate	Out	Out	Total
Mon Apr 04 07:40 AM		Mon Apr 04 07:40 AM	8:00				
Added	Mon Apr 04 08:24 AM	2006	8:00				1,600
Added	Mon Apr 04 12:00 PM	2006	8:00				2,600
Added	Mon Apr 04 12:30 PM	2006	8:00				2,550
Added	Mon Apr 04 03:03 PM	2006	8:00				2,100
Added	Mon Apr 04 03:09 PM	2006	8:00				8,850
							Total 8,850 0.00 8.85

- Unlimited Pay Categories and employee and Payroll Groups
- 50 Employee Capacity Software (upgradeable to 1000 employees)
- Single PC version software (Network version available [upgrade])
- Built-In Payroll Module (ADP, Paychex, QuickBooks, and more)
- Supports Weekly, Bi-Weekly, Semi-Monthly Payrolls
- Punch and Shift Rounding Options
- Accommodates up to 3 Shifts
- Department / Job Transfers
- Many Standard Reports