

ATRx Secure PunchIn™

BIOMETRIC FINGERPRINT TECHNOLOGY



INSTALLATION GUIDE

Thank you for purchasing ATRx Secure PunchIn. This installation guide will help you learn how to connect the fingerprint reader, enable biometrics in the software and enroll employee fingerprints in the system.

Before You Start:

1. Ensure your computer meets the minimum system requirements. See the product box

2. Verify package contents:

- Attendance Rx™ software
- ATRx Secure PunchIn™ fingerprint reader (FIU)
- Installation guide



Software Installation:

Install Attendance Rx software by inserting the software CD into the CD-ROM Drive. Follow and complete the Setup Wizard which will ask you to input your Pay Period information, Shift and Lunch rules and a new password. At completion of the Setup Wizard enter at least one employee and then close the administrator screen.

NOTE: Leave the CD in the CD-ROM drive until the hardware has been installed.

Connect ATRx Secure PunchIn fingerprint reader to Windows Based PC:

1. Plug the fingerprint reader cable into an available USB port on the PC. The location of the USB port will depend on the configuration of your computer.



The computer should display a message indicating that the new hardware was found.

When the 'Found New Hardware Wizard' is displayed:

1. If the Wizard asks "Can Windows connect to Windows Update to search for Software?", select "No, not this time".
2. Verify that the Attendance Rx CD is still in the CD-ROM drive. If NOT, then load it, and when the InstallShield Wizard starts to run select "Cancel".
3. Respond to the Wizard questions by accepting the default answers to the questions.
4. The Wizard will display a message when the hardware installation is complete.

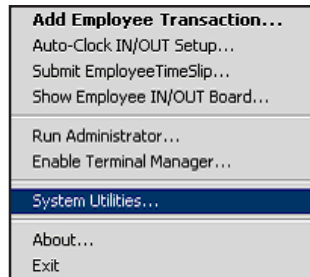
If the New Hardware Wizard is NOT displayed or fails to complete, go to Troubleshooting - Manually Installing the Fingerprint Unit (FIU).

Enable Biometrics in the Software

1. To confirm the software is running, a System Tray Icon will appear in the bottom right-hand corner of your PC desktop screen.



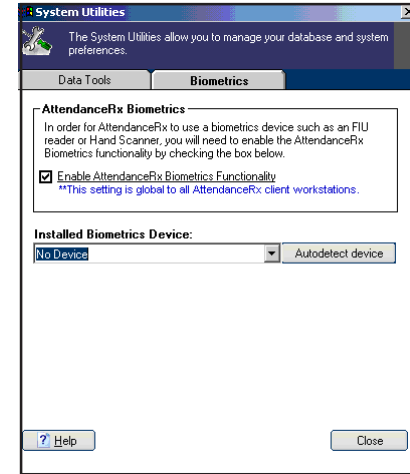
2. To enable the ATRx Secure PunchIn fingerprint reader biometrics (FIU) in the software, right click the System Tray Icon and select System Utilities.



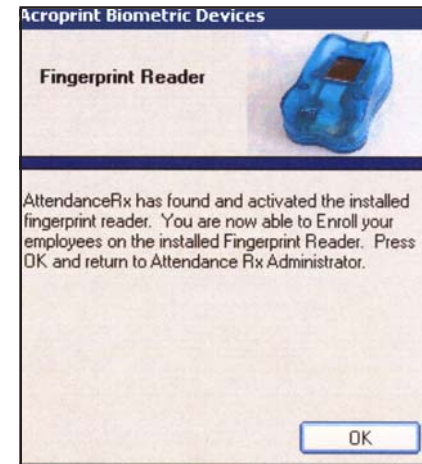
3. If prompted to log in as the Administrator, please do so in order to complete this step.
4. When the screen appears, select the Biometrics tab.

Enable Biometrics in the Software

5. Place the mouse in the check box to the left of Enable Attendance Rx Biometrics Functionality and left click one time to enable.




6. Click the Autodetect device button.
7. Verify that the FIU device shows in the Installed Biometric Device field.

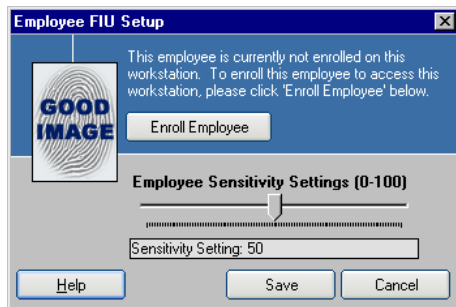


8. Press the Close button.

Enrolling an Employee in the Software

To enroll an employee's fingerprint:

1. Right click the System Tray Icon. 
2. Select "Run Administrator".
3. Go to the Employee screen in the Administrator by clicking "Employees" on the left side of the Administrator.
4. Select the row for the given employee and click Enroll FIU button. The dialog displayed above will be shown.
5. Click "Enroll Employee" and follow the instructions as they are displayed on the screen.



After enrolling the sensitivity setting defaults to a value of 50. The setting can be modified if necessary.

6. Click the Save button to complete the FIU enrollment procedure for the employee.
7. Repeat Steps 5 and 6 to enroll additional employees.

Troubleshooting

1. Make sure Attendance Rx software is running

In order for you to enable Biometrics functionality and enroll employees the Attendance Rx software must be running.

If the system tray icon is not visible please manually start the software by clicking Start > Programs > Attendance Rx .



2. Manually Installing the Fingerprint Identification Unit (FIU)

On most workstations Microsoft Windows will automatically install the drivers and your new device will be ready for immediate use. However, certain configurations of Microsoft Windows requires the Windows CD as well as the Attendance Rx CD to provide the right drivers during installation. You may be asked to swap your Windows CD and your Attendance Rx CD a few times during the installation process.

You may be asked to provide one or more of these CDs during installation:

Attendance Rx Installation CD

Contains FIU Drivers

Microsoft Windows™ CD (2000, XP)

Contains OS Specific Hardware Drivers\ FIU Drivers

- A. Navigate to the Control Panel and find the Add/Remove Hardware icon.
- B. Double click Add/Remove Hardware.
- C. The Add/Remove Hardware display will appear.
- D. Click Next to begin the wizard.
- E. Select Add/Troubleshoot a device.
- F. Click Next.
- G. If the Fingerprint Identification Unit (FIU) is not found, select Add a New Device from the list.
- H. Click Next.
- I. Select Yes, search for new hardware from the options.
- J. Click Next.
- K. Windows will begin searching for new devices and will indicate if any have been found.
- L. If Microsoft Windows detects the FIU device, follow the steps of the New Hardware Installation Wizard.

If Microsoft Windows hardware wizard fails to locate and install the FIU device contact the manufacturer of your computer for details on installing USB devices.

NOTE: This equipment has been tested and found to comply with the limits for a Class B digital device, pursuant to Part 15 of the FCC Rules. These limits are designed to provide reasonable protection against harmful interference in a residential installation. This equipment generates, uses and can radiate radio frequency energy and, if not installed and used in accordance with the instructions, may cause harmful interference to radio communications. However, there is no guarantee that interference will not occur in a particular installation. If this equipment does cause harmful interference to radio or television reception, which can be determined by turning the equipment off and on, the user is encouraged to try to correct the interference by one or more of the following measures: Reorient or relocate the receiving antenna; Increase the separation between the equipment and receiver; Connect the equipment into an outlet on a circuit different from that to which the receiver is connected; Consult the dealer or an experienced radio/TV technician for help.

PN: 06-0326-000 Rev. C