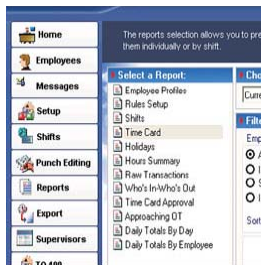
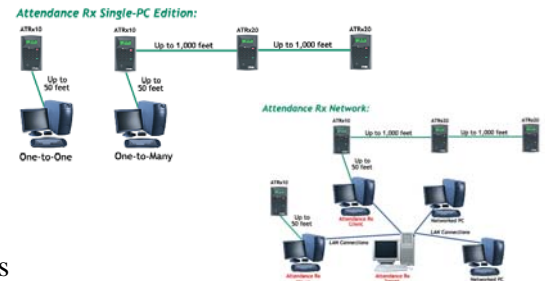


## Acroprint Attendance Rx PROXtime

- 50 employee capacity (upgradeable to 100)
- Single PC or Network versions available
- Over a dozen standard payroll export options
- Accommodates up to 12 different shifts / schedules
- Manage hourly and salaried employees in same application
- Multiple secondary terminals can be connected to the system
- Use Proximity badge and/or PIN entry on clock terminal keypad
- Handles weekly, bi-weekly, semi-monthly, and monthly pay periods
- Real time clock terminal means transactions are immediately sent to PC (Software must be running at all times)
- Built-In Payroll Interface Module to more than 10 Payroll Software / Services (including QuickBooks®, ADP®, and Paychex®)

### Proximity Clock Terminal Time & Attendance System



EDIT TIME CARDS AND PRINT REPORTS FROM YOUR COMPUTER

| Shift         | REG   | OT1  | OT2  | Total Hrs |
|---------------|-------|------|------|-----------|
| Hours         | 7:56  | 0:00 | 0:00 | 7:56      |
| M             | 7:59  | 7:59 | 0:14 | 8:14      |
| PM            | 8:14  | 7:58 | 0:00 | 7:58      |
| PM            | 7:58  | 7:58 | 0:00 | 7:58      |
| Weekly Totals | 39:51 | 0:14 | 0:00 | 40:05     |
| 3:30 PM       | 7:30  | 7:30 | 0:00 | 7:30      |
| 3:31 PM       | 7:59  | 7:59 | 0:00 | 7:59      |
| 3:30 PM       | 7:57  | 7:59 | 0:00 | 7:57      |
| 4:31 PM       | 7:59  | 7:59 | 0:00 | 7:59      |
| 4:31 PM       | 8:04  | 8:00 | 0:04 | 8:04      |
| Weekly Totals | 39:25 | 0:04 | 0:00 | 39:29     |

EXPORT DATA TO PAYROLL

